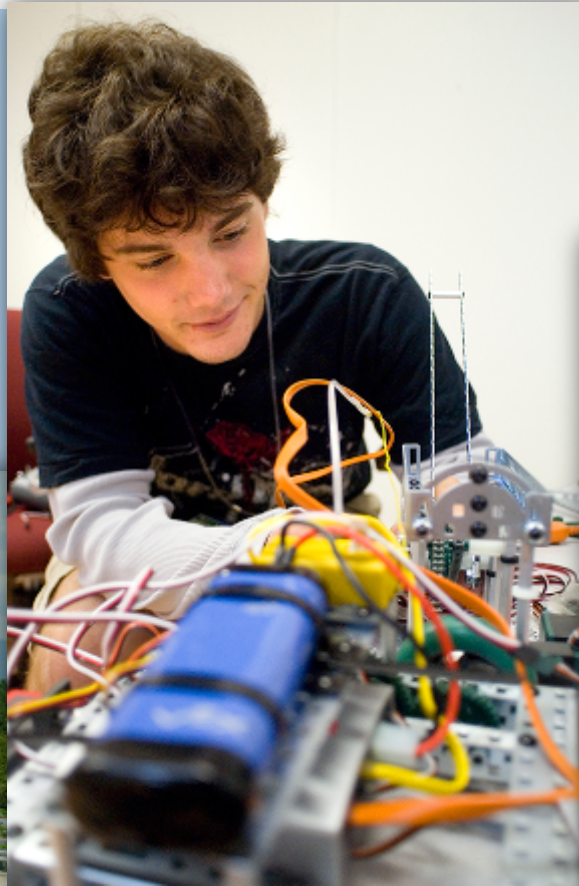




APPALACHIA: AMERICA'S NEXT GREAT INVESTMENT OPPORTUNITY

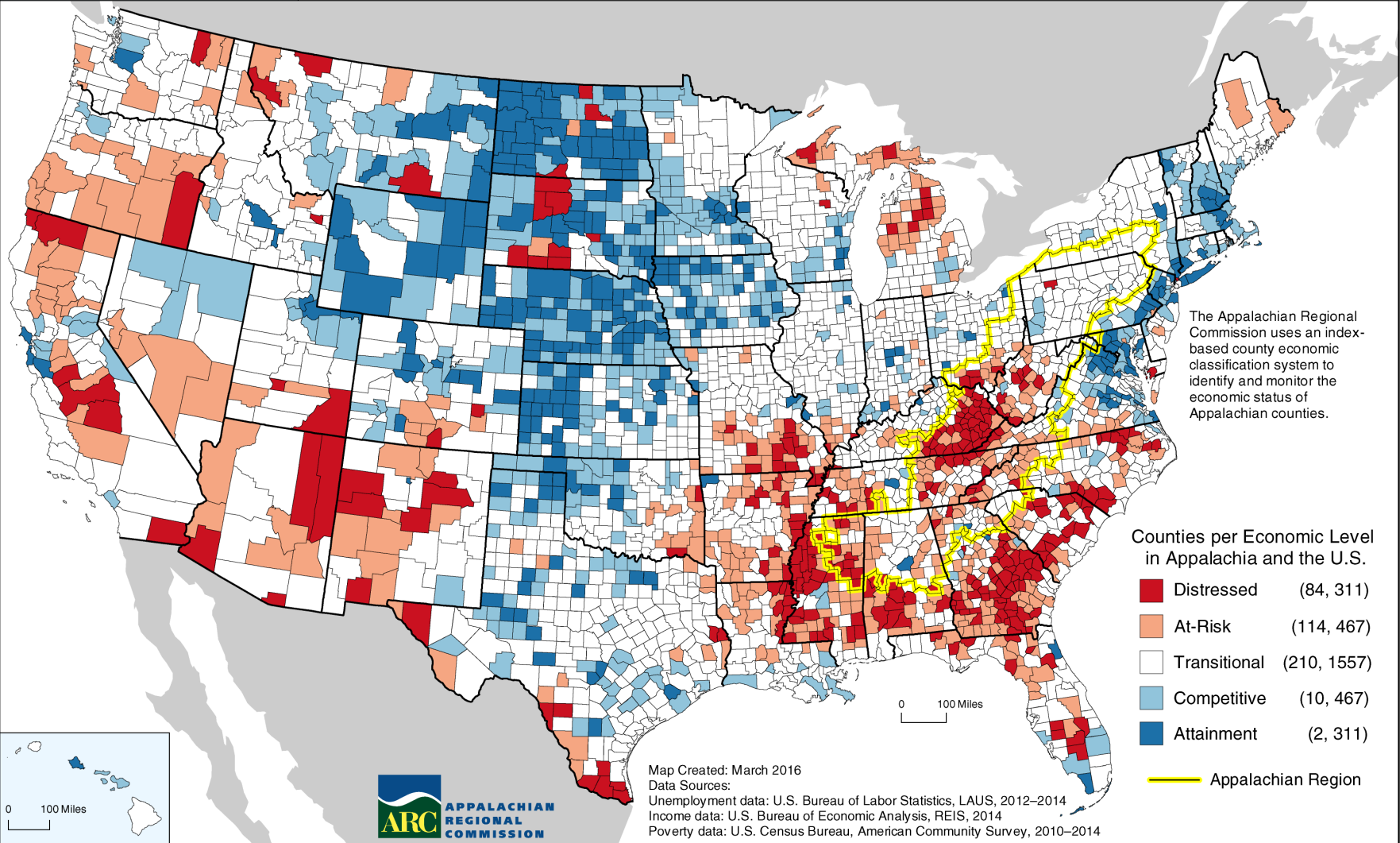
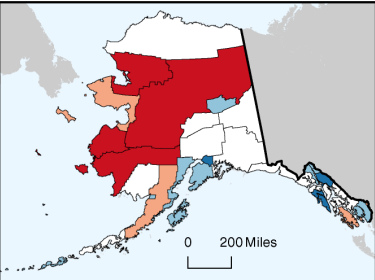


Strategic Investment Goals

- 1 Economic Opportunities**
Invest in entrepreneurial and business development strategies that strengthen Appalachia's economy.
- 2 Ready Workforce**
Increase the education, knowledge, skills, and health of residents to work and succeed in Appalachia.
- 3 Critical Infrastructure**
Invest in critical infrastructure—especially broadband; transportation, including the Appalachian Development Highway System; and water/wastewater systems.
- 4 Natural and Cultural Assets**
Strengthen Appalachia's community and economic development potential by leveraging the Region's natural and cultural heritage assets.
- 5 Leadership and Community Capacity**
Build the capacity and skills of current and next-generation leaders and organizations to innovate, collaborate, and advance community and economic development.

County Economic Status in the United States, Fiscal Year 2017

(Effective October 1, 2016 through September 30, 2017)



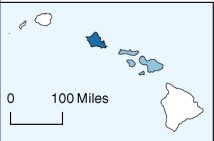
The Appalachian Regional Commission uses an index-based county economic classification system to identify and monitor the economic status of Appalachian counties.

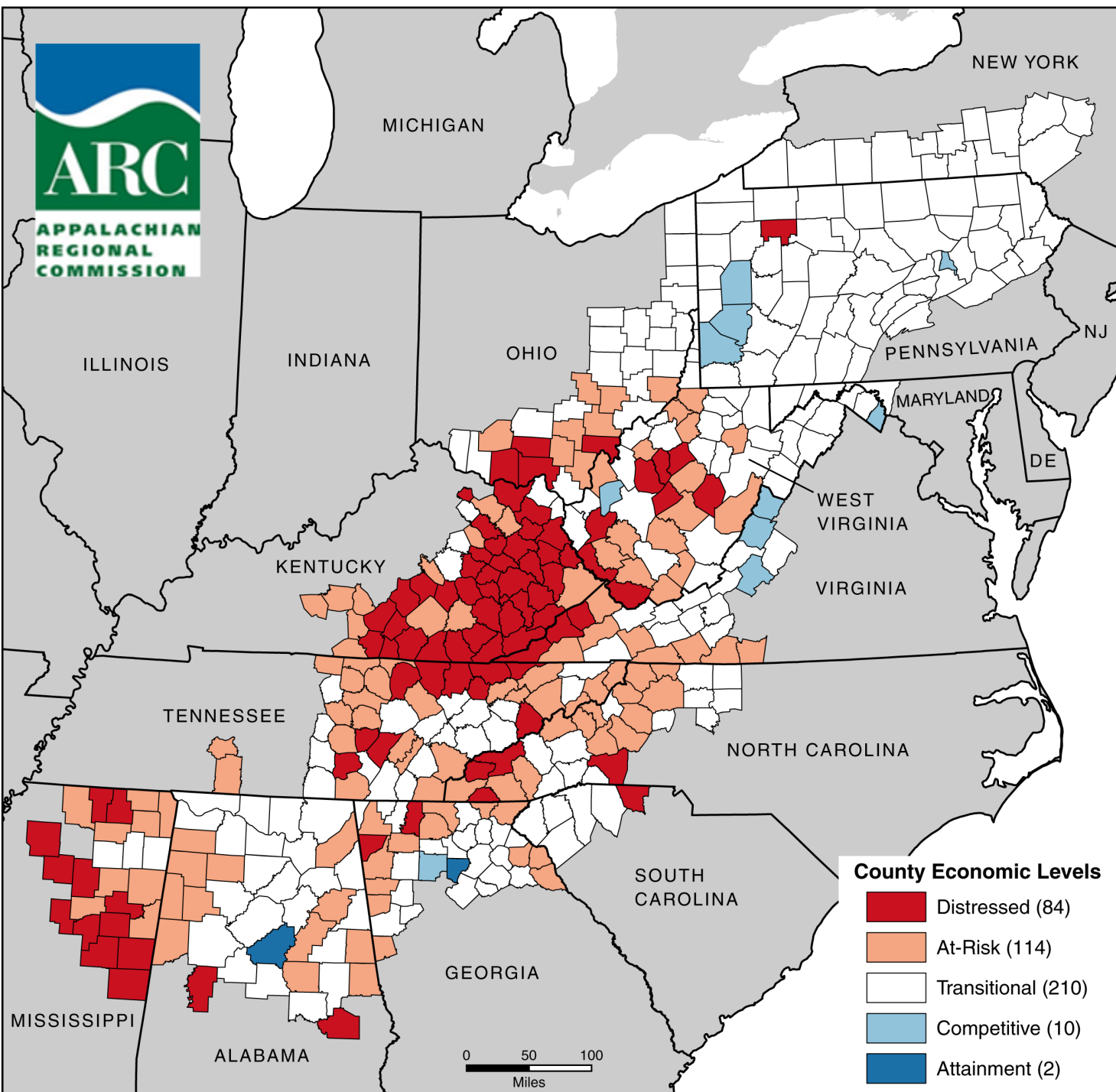
Counties per Economic Level in Appalachia and the U.S.

- Distressed (84, 311)
- At-Risk (114, 467)
- Transitional (210, 1557)
- Competitive (10, 467)
- Attainment (2, 311)

— Appalachian Region

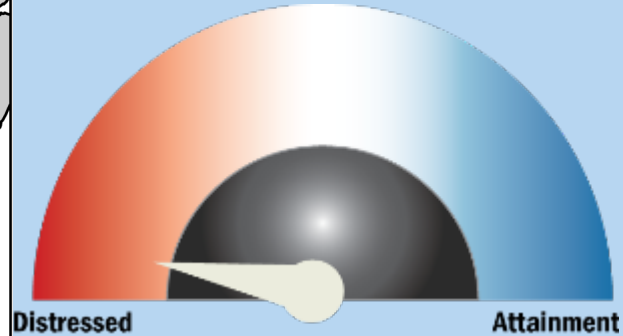
Map Created: March 2016
 Data Sources:
 Unemployment data: U.S. Bureau of Labor Statistics, LAUS, 2012–2014
 Income data: U.S. Bureau of Economic Analysis, REIS, 2014
 Poverty data: U.S. Census Bureau, American Community Survey, 2010–2014





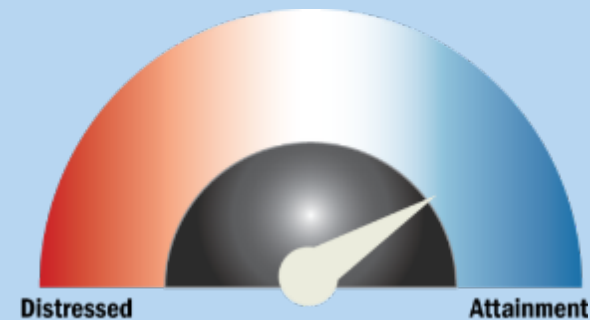
Mission:

Innovate, partner, and invest to build community capacity and strengthen economic growth in Appalachia.



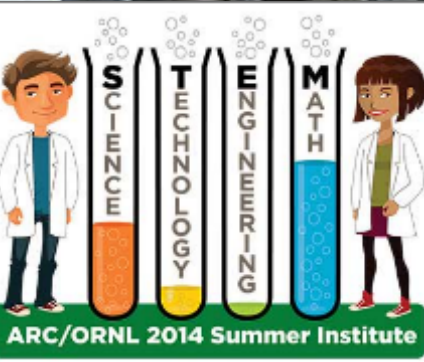
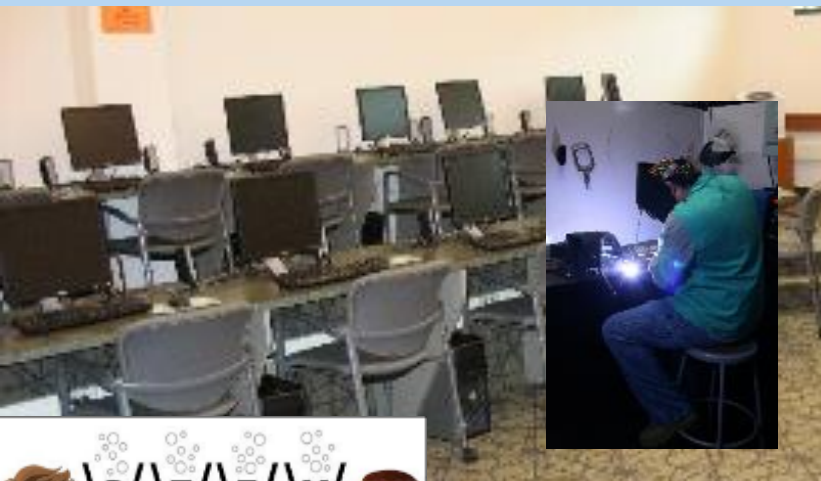
Vision:

Appalachia is a region of great opportunity that will achieve socio-economic parity with the nation.



ARC, DIVERSIFICATION, WORKFORCE, ENTREPRENEURSHIP

WHAT DOES ALL OF THAT THAT MEAN?
WHAT DOES THAT LOOK LIKE?



SPOTLIGHT ON (SOME)* WORKFORCE DEVELOPMENT INITIATIVES IN APPALACHIA

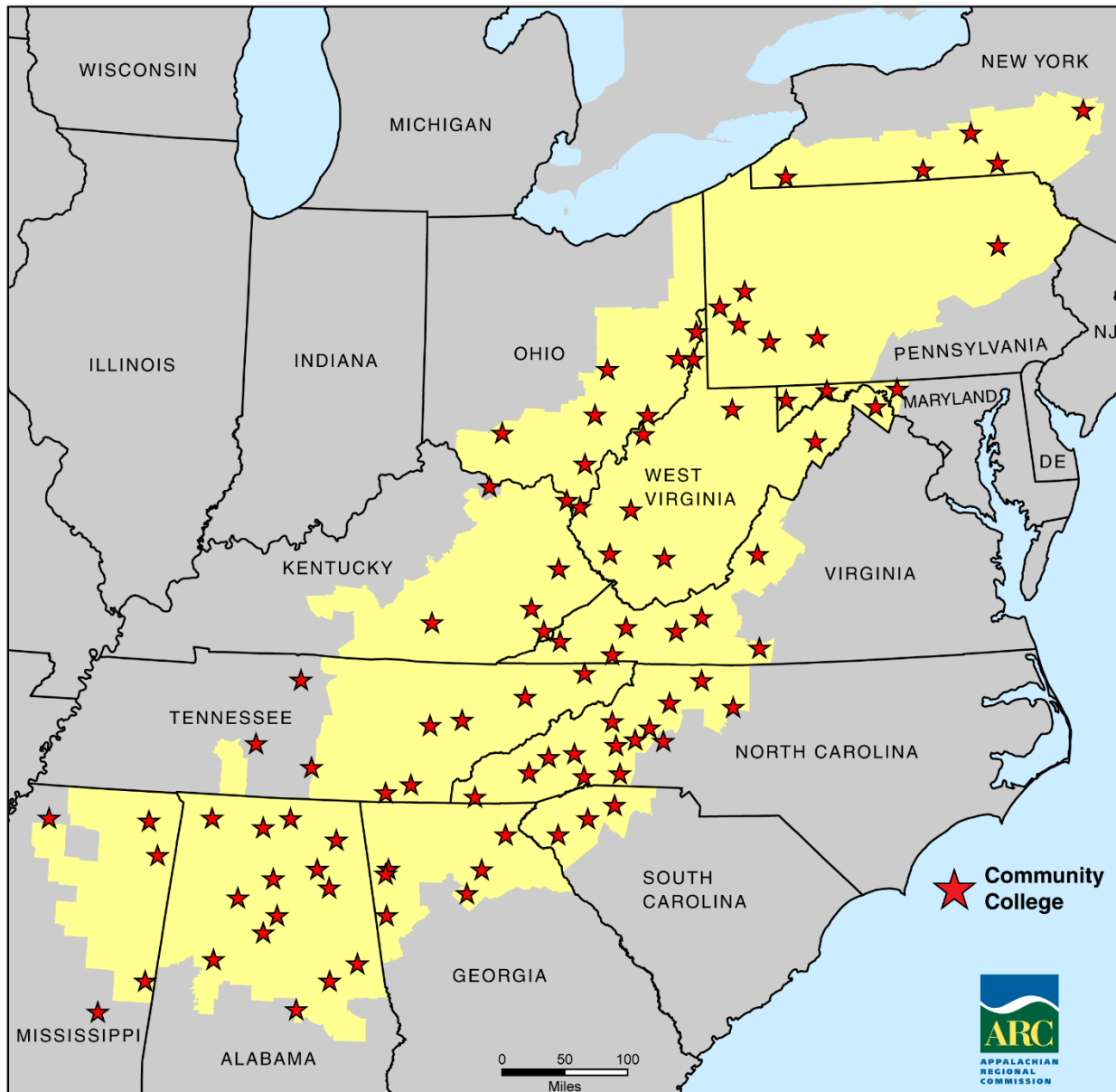
Alfred State (NY) Center for Renewable Energy
<http://www.alfredstate.edu/sustainability/center-for-renewable-energy>

Hazard Community & Technical College (KY)
<http://www.hazard.kctcs.edu>

Calhoun Community College (AL) <http://www.calhoun.edu/>

Walter State (TN)
<http://www.ws.edu/academics/technical-ed/clean-energy/>

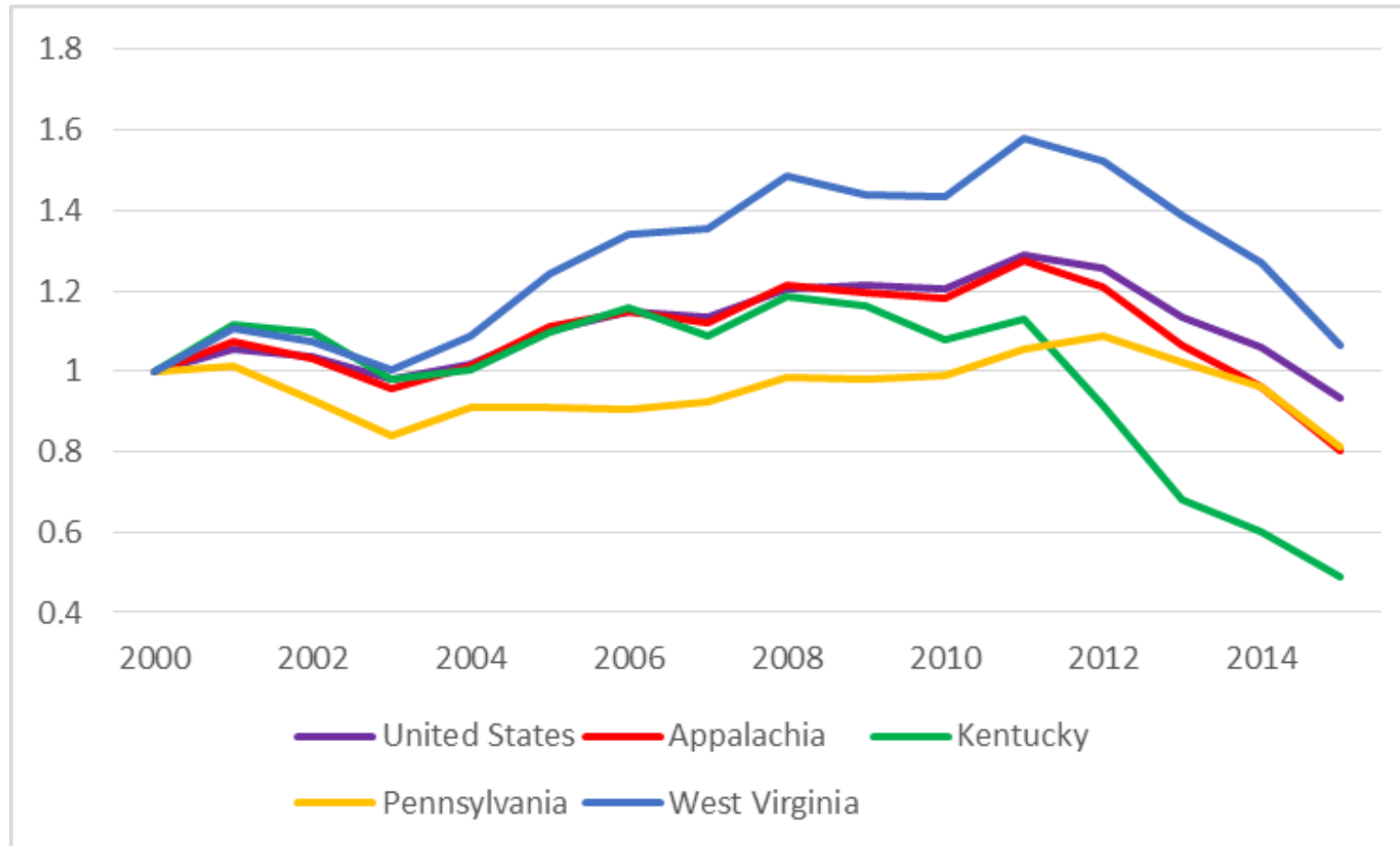
***Many more! Not a comprehensive list.



Community Colleges in ARC Region, 2014

Coal Mining Job Growth/Loss, 2000 to 2015

Of the 25,417 coal mining jobs lost in the U.S. from 2011 to 2015, 87.7 percent of them were in Appalachia, a regional loss of 22,305 direct jobs in mining



Source: U.S. Department of Labor, Mine Safety and Health Administration (MSHA)

HOW DID WE GET HERE?

A combination of factors have impacted Appalachia's coal economy



Inexpensive natural gas



Declining costs for renewable energy



Accelerating advances in energy efficient technology



Flattening demand for electricity

WHO IS A COAL IMPACTED COMMUNITY?



Coal mining



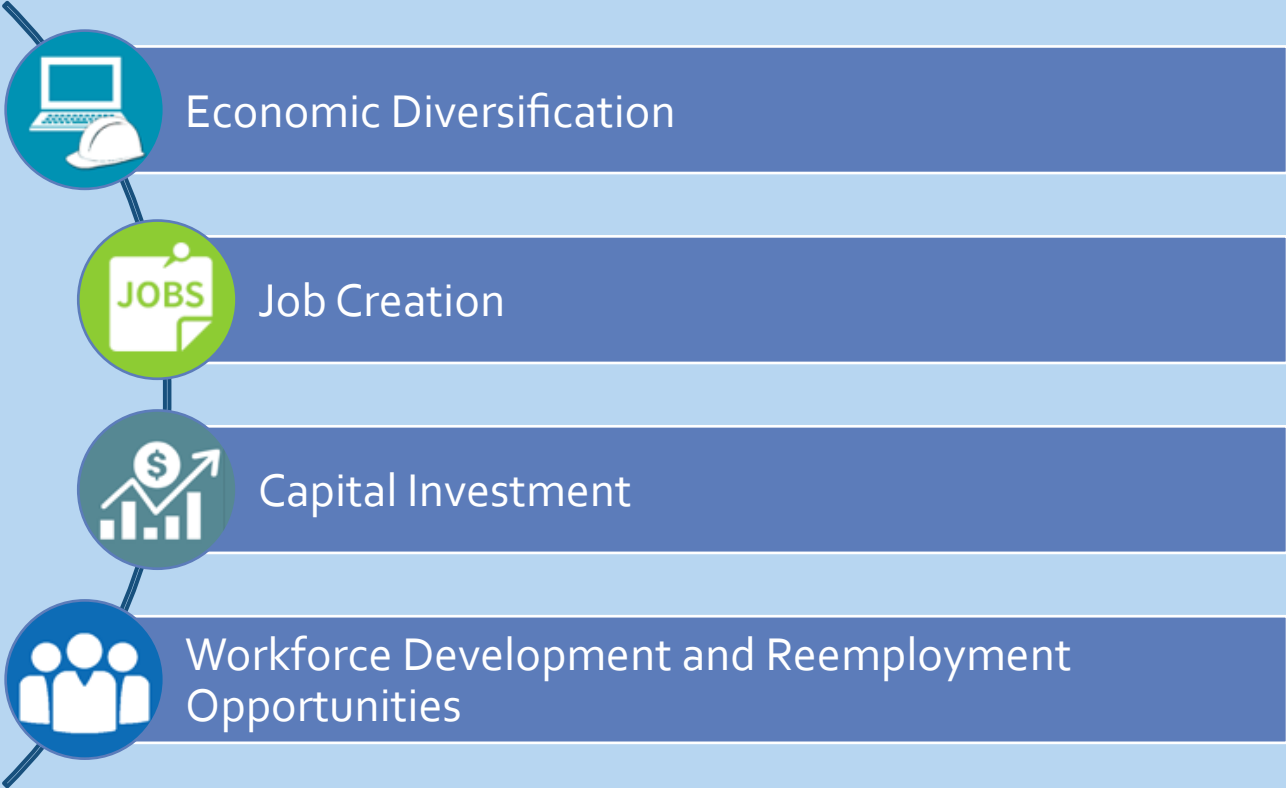
Coal-fired power generation



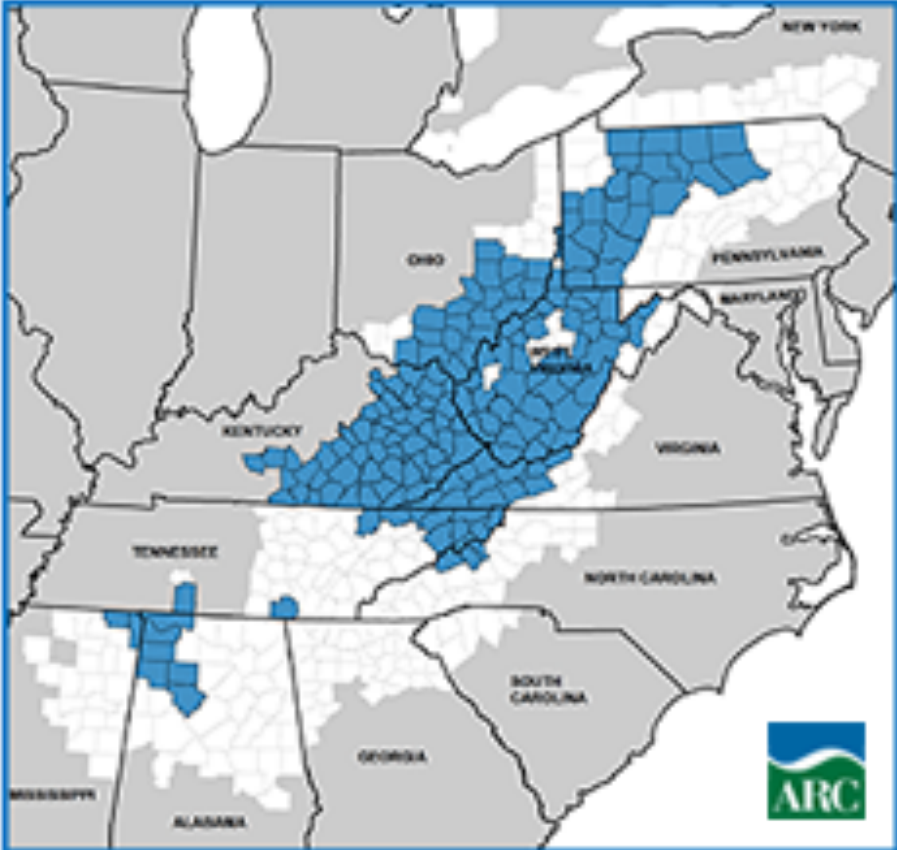
Related transportation, logistics, and supply chain businesses

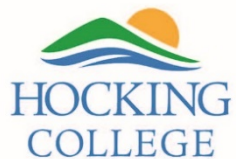
POWER 2016 INITIATIVE

- POWER Objectives



As of October 2016, ARC has invested nearly **\$47 million** through the POWER Initiative to diversify economies in **174** coal-impacted counties across Appalachia.





Workforce Development

Revitalizing an Industry-ready Skilling Ecosystem of Sustainability

POWER 2016
GRANTEE:



NELSONVILLE, OH



*Create a future
that works
for you*



*Transforming economies.
Transforming lives.*

CDL Welding Petroleum Technologies Solar Automotive



All images: Hocking College

http://www.hocking.edu/programs/advanced_energy



POWER 2016
GRANTEE:

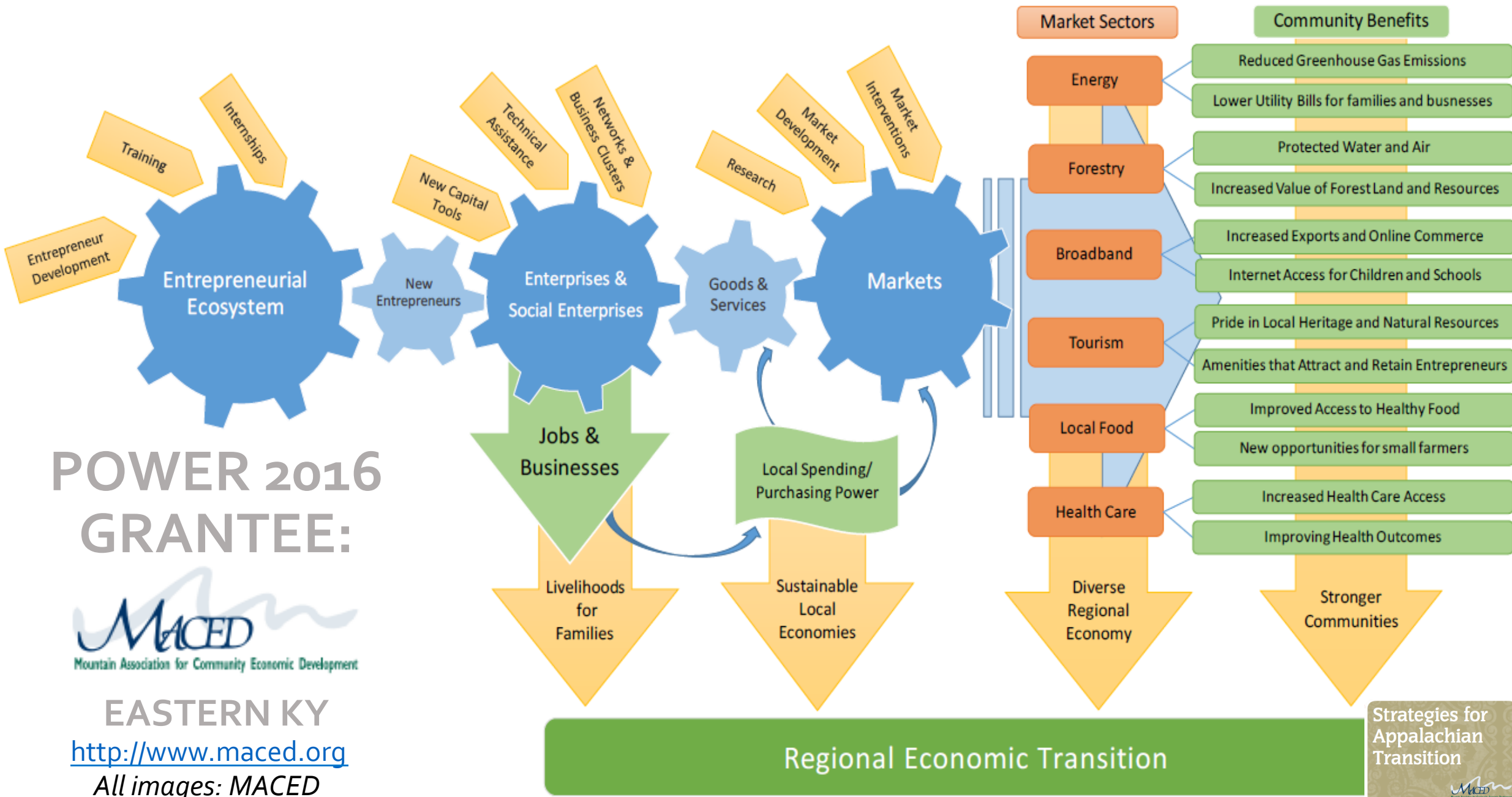


<http://www.coalfield-development.org/>

WEST VIRGINIA

Partners: USDA, Benendum Foundation, Solar Holler, Many more!
All images: Coalfield Dev. Corp.





**POWER 2016
GRANTEE:**



EASTERN KY

<http://www.maced.org>

All images: MACED





POWER 2016
GRANTEE:



EASTERN KY
<http://fahe.org/blog>



POWER 2016
GRANTEE:



SW VA
<http://sw.edu/swcc-redi-center/>



APPALACHIAN
REGIONAL
COMMISSION

Get Started - Get in touch

Start with the industry or strategy (need) being addressed

Identify a solution

Define the geography

Gather and organize the collaborators

Determine fit for ARC and/or others

Connect with your state ARC program manager

- **ARC** | www.arc.gov
- **Connect with your ARC State Program Managers** | <http://www.arc.gov/about/stateprogrammanagers.asp>
- **Local Development Districts** via Development District Assoc. of Appalachia | <http://www.ddaa-ldd.org/>
- **Community Colleges of Appalachia** | <http://www.ccofapp.org/>
- **Julie Lawhorn** | Infrastructure Program Analyst, ARC | jlawhorn@arc.gov | 202-884-7776